

KANE COUNTY

DIVISION of TRANSPORTATION

Carl Schoedel, P.E.
Director of Transportation
County Engineer



41W011 Burlington Road
St. Charles, IL 60175
Phone: (630) 584-1171
Fax: (630) 584-5239

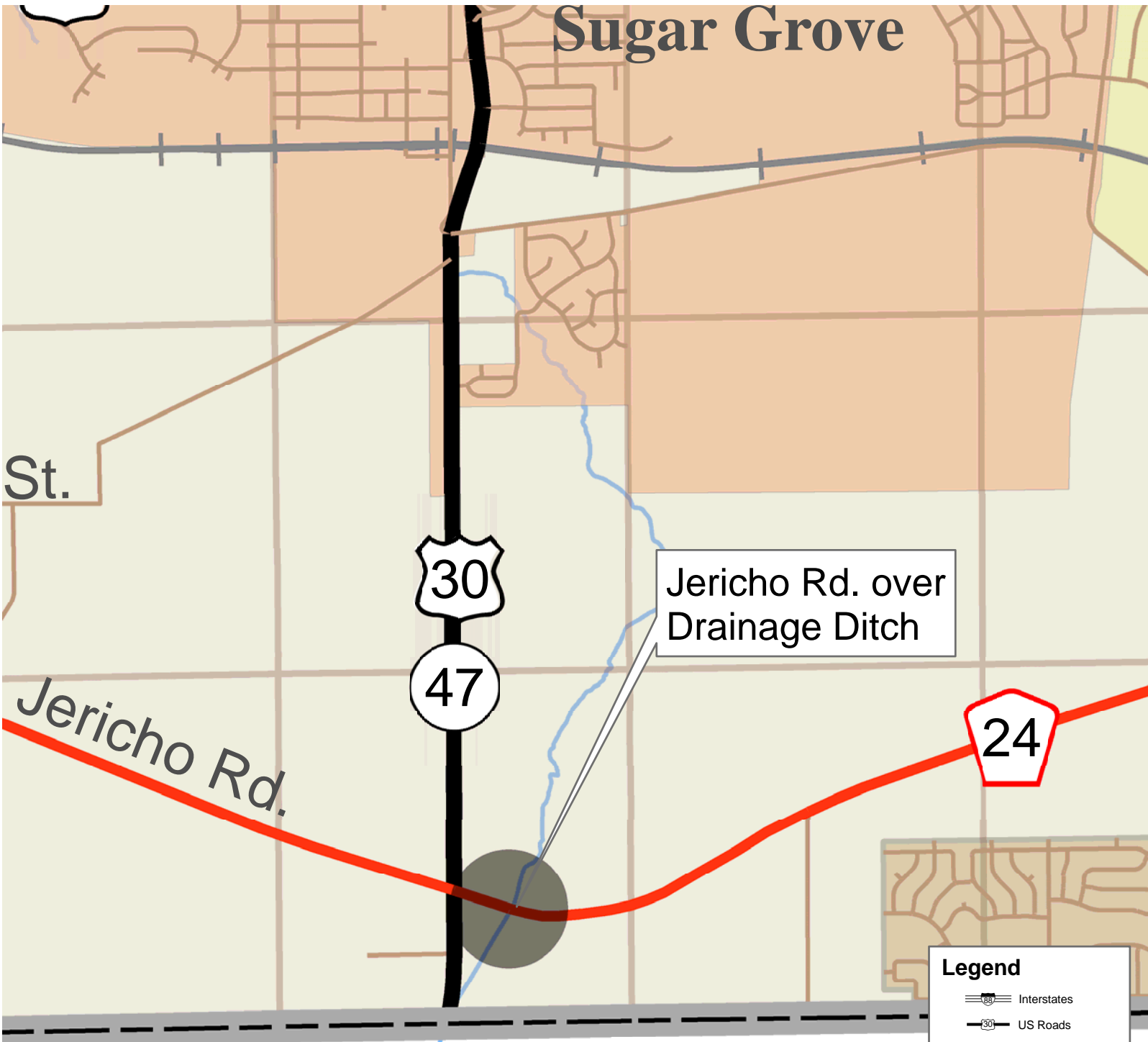
October 2, 2009

PRESS RELEASE

Geotechnical borings will be taken on Jericho Road approximately 1 mile east of the intersection of Jericho Road at IL 47 on Wednesday, October 7th from 9:00 AM to 3:00 PM. Traffic will be restricted to one lane and controlled by flaggers.

Any questions or concerns may be directed to Paul LaFleur, Kane County Division of Transportation, at (630) 584-1170. Construction updates and traffic alerts are available on the Kane County web page at <http://www.co.kane.il.us>.

Sugar Grove



Jericho Rd. over Drainage Ditch

St.

Jericho Rd.

30

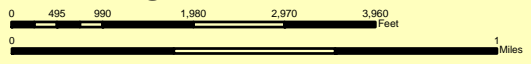
47

24

Legend

- Interstates
- US Roads
- State Roads
- County Roads
- Other Roads
- Rail Roads
- County Boundary
- Township Boundary
- Fox River
- Forest Preserves
- Municipalities

Section 08-00382-00-BR
Jericho Rd over
Drainage Ditch



| | | |
|------------|------------|-------------|
| Harpers | Rubid | Dunker |
| Burlington | Paris | Elgin |
| Verg | Carleton | St. Charles |
| Kanville | Blackberry | Genoa |
| Big Rock | | Seneca |
| | | Aurora |

